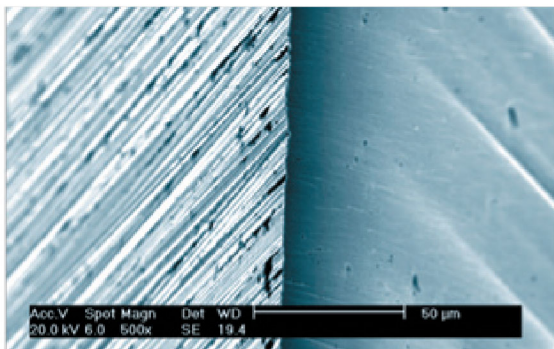


# The Effects of 'Careless' Blade Handling

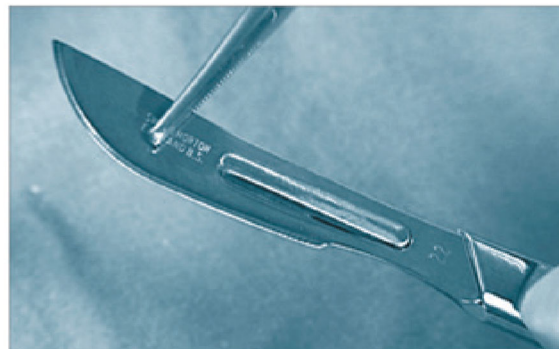
Here are a few observations which you may wish to try and identify in your own working environment and maybe you can help us to help yourself and your colleagues to reduce the occurrence of such problems in the future.

## BEFORE USE

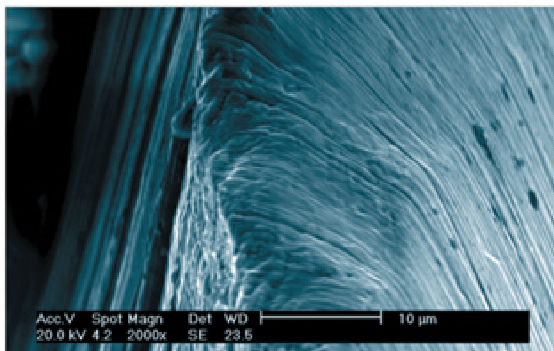
### PRISTINE SCALPEL BLADE EDGE



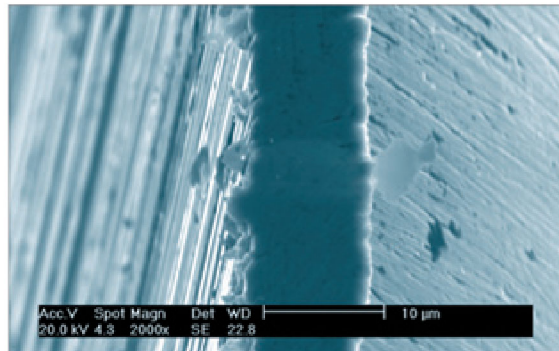
### FITTING THE SURGICAL BLADE



### DROPPED ONCE INTO METAL TRAY



### AFTER SCUFFING ON METAL TRAY



**1** When removing the blade from the protective foil packet make sure it is not dropped into a metal bowl or container for this can remove the initial "keenness" of the cutting edge before it has been fitted to the handle.

**2** If you have forceps or needle holders to remove the blade from its protective foil packet then make sure that you DO NOT grip the blade across the cutting edge.

**3** The same is applicable if picking up the blade with forceps or using them to fit the blade to the corresponding surgical handle.

**4** Bringing the cutting edge into contact with any metallic objects or instruments before or during usage, such as scissors, forceps, trays, dishes etc. can have the same detrimental effect on the blade.

## DURING USE

- 1** Contact with bone
- 2** Cutting through granular tissue
- 3** Lateral pressure

The products shown are manufactured for use by trained health care professionals and can cause injury if used or handled incorrectly. The information and illustrations used in connection with the products shown on this sheet are for general guidance only and users must seek proper training and instruction in their use before using or handling such products. Cincinnati Surgical is excluded of all liability for injury to the extent permitted by law.

